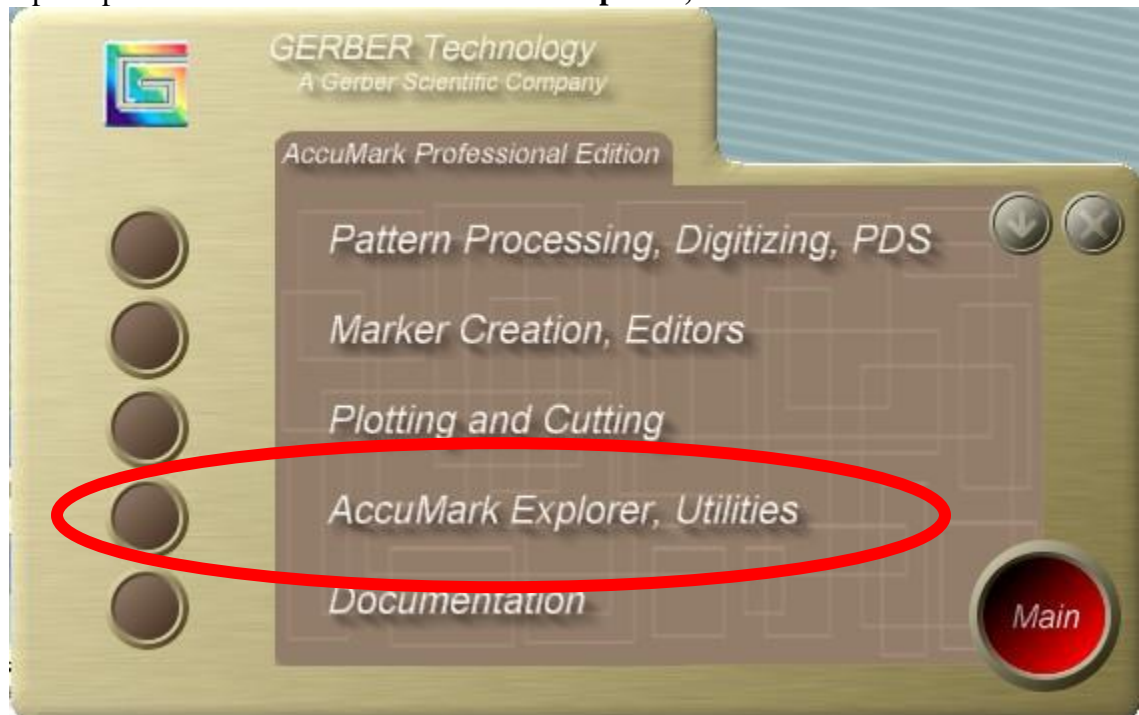


Gerber 8.4 – Setting Up HPGL Plotter File Printing

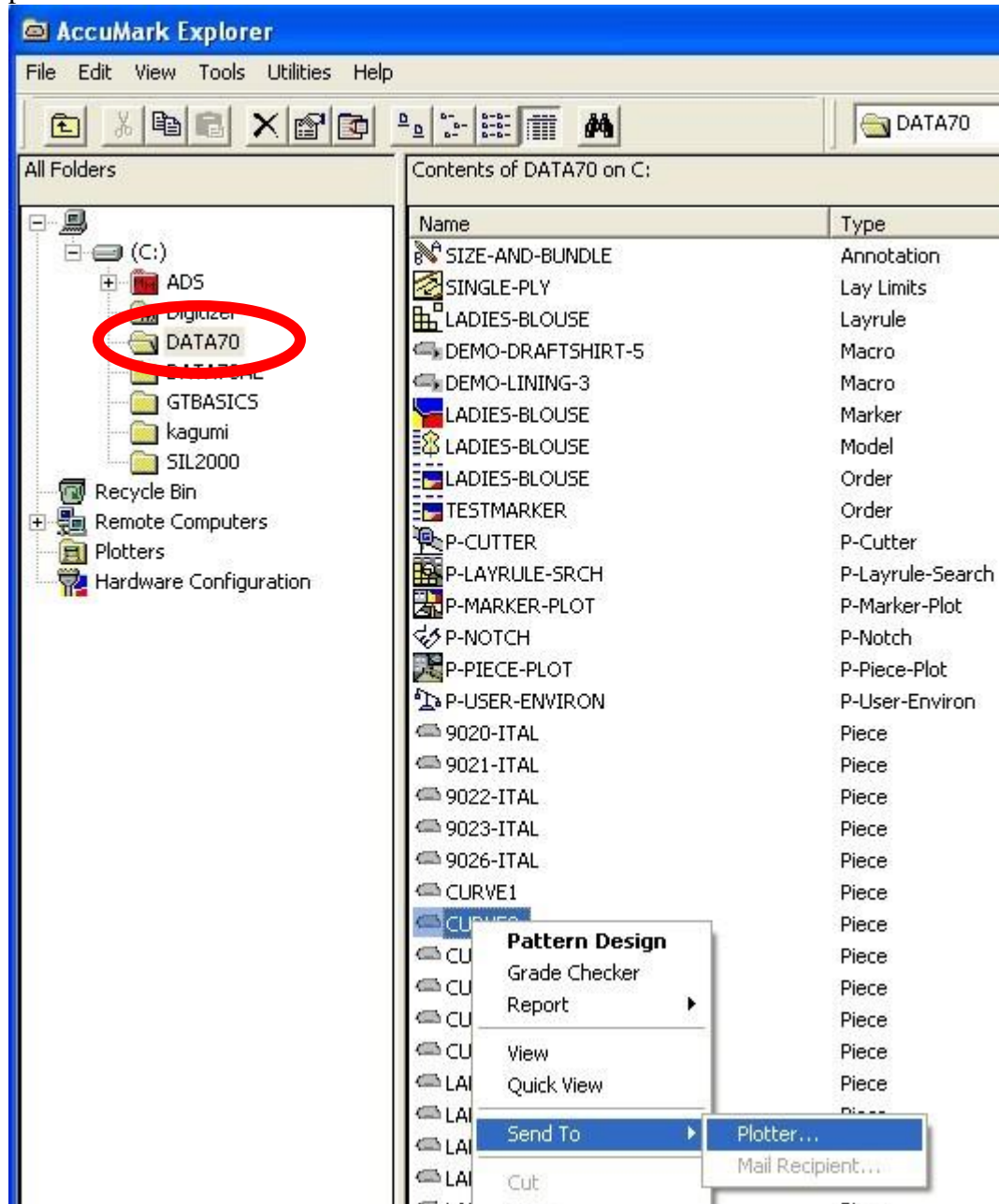
1. Open up Gerber 8.4 and select **AccuMark Explorer, Utilities**



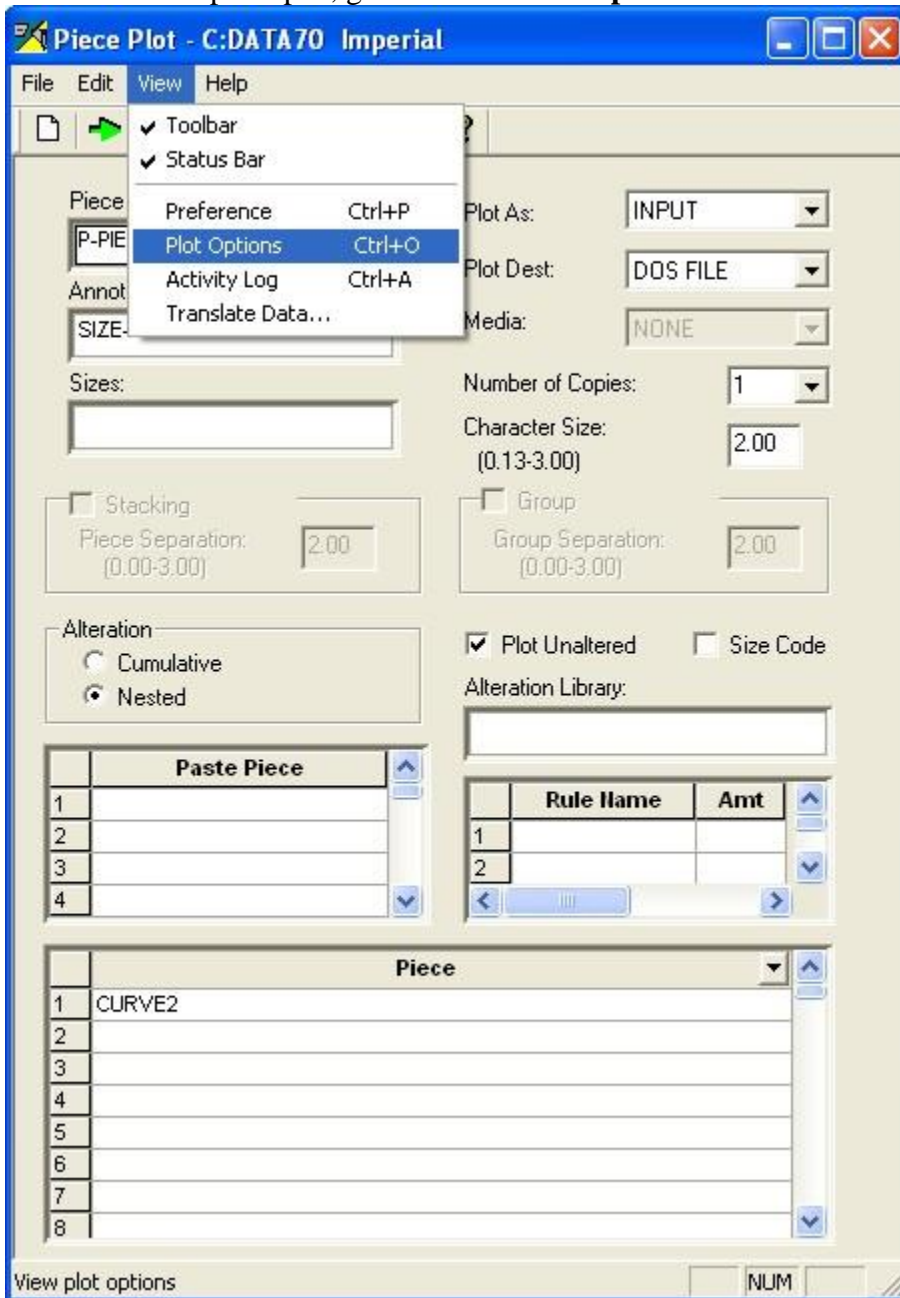
2. Next, double click **AccuMark Explorer**



3. On the left hand side, select a data folder (**Data70** is a default database folder with generic pieces that can be used to test). In the right window, **Right click** on a piece and select **Send To > Plotter...**



4. With Piece plot open, go to **View > Plot Options**



5. Inside Plot Options is where you configure your plotter. Make sure you select the following:

File Type: **HPGL**

Default Plot Destination: **DOS FILE**

Destination File:

Directory: **<Insert your plot file location here>**

File Name: **Long Filename**

File Extension: **Use Count (.000, .001, ...) ←HPGL Standard**

Image

Default Directory and image type, set if needed

Piece Plot Options

File type
 Generic
 HPGL
 DXF

Bundles by
 Marker
 Model

Default plot destination: DOS FILE

Destination File
Default Directory: C:\HPGL
File Name
 8 Character Filename
 Long Filename
 Append Count to Filename (File000, File001...)

File Extension
 Use Specified Extension: PLT
 Use Count (.000, .001...)
 Use Last Dash As Separator (File-Ext --> File.Ext)
 No File Extension

Image
Default Image directory: C:\HPGL
Default Image type: JPEG

Default plot media: None

Auto-process

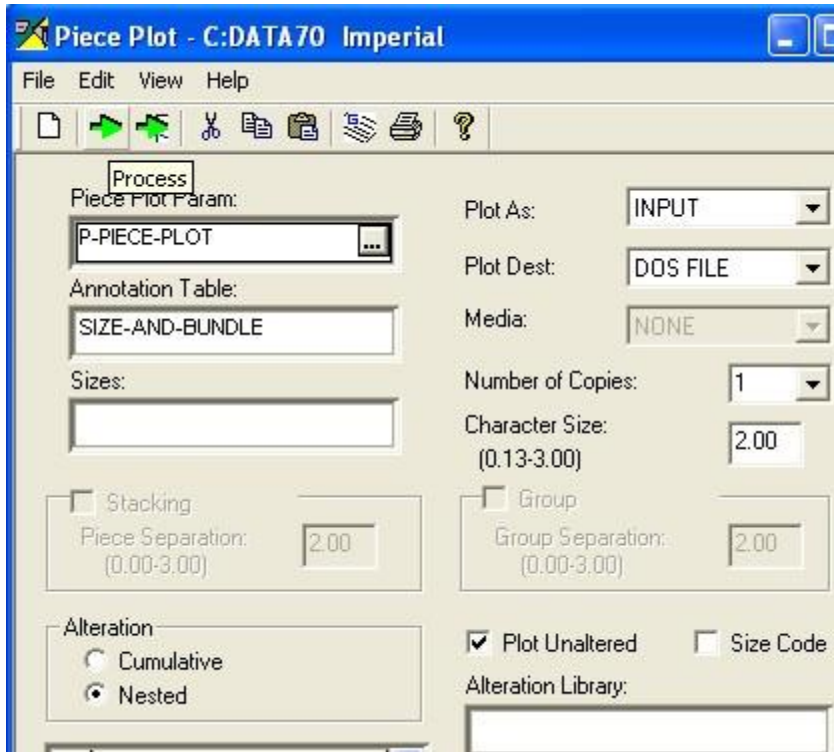
Utilization Settings
 Used %
 Waste %
 Yards/Inches
 Decimal Yards

OK Cancel

6. Hit OK, then make sure your Piece plot is setup as follows:

Plot As: **Input**

Plot Dest: **Dos File**



7. You are now ready to plot your pieces to an HPGL file usable by Ioline. Press the **Green Arrow** at the top to process the file and it will be stored in the folder you selected up in step 5. Simply point Ioline software to this folder and you will be able to print the files.