

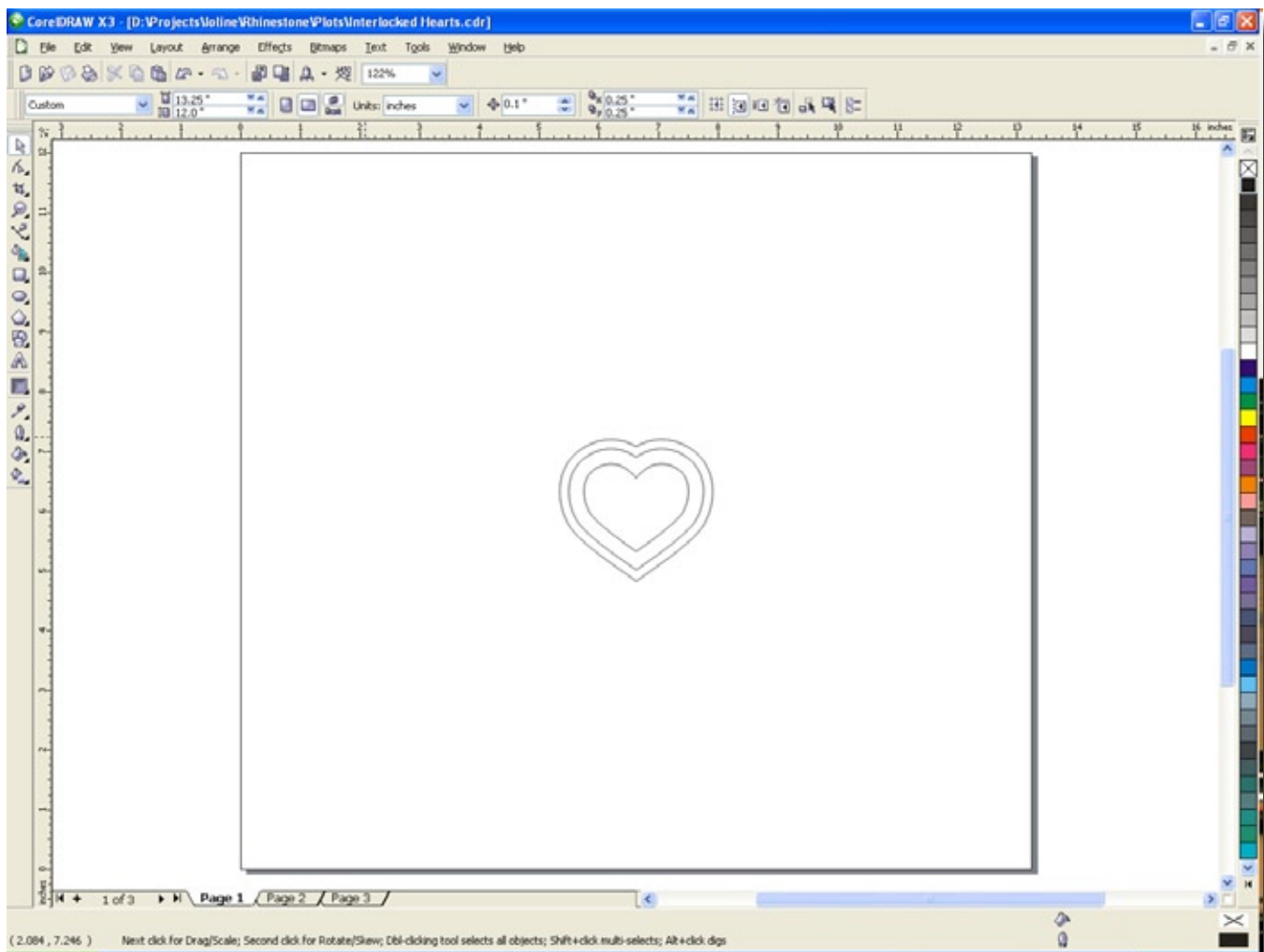
Chapter 4: Tutorials

Exporting a 3 Color Design in CorelDraw

This tutorial will introduce you to using the Ioline CrystalStudio software with the Ioline CrystalPress Motif Maker. A 3 color design is very easy to make on the CrystalPress, this tutorial will walk you through the steps needed to produce a multi-colored design.

Note: CorelDraw X3 is used in this tutorial but any version of CorelDraw will work.

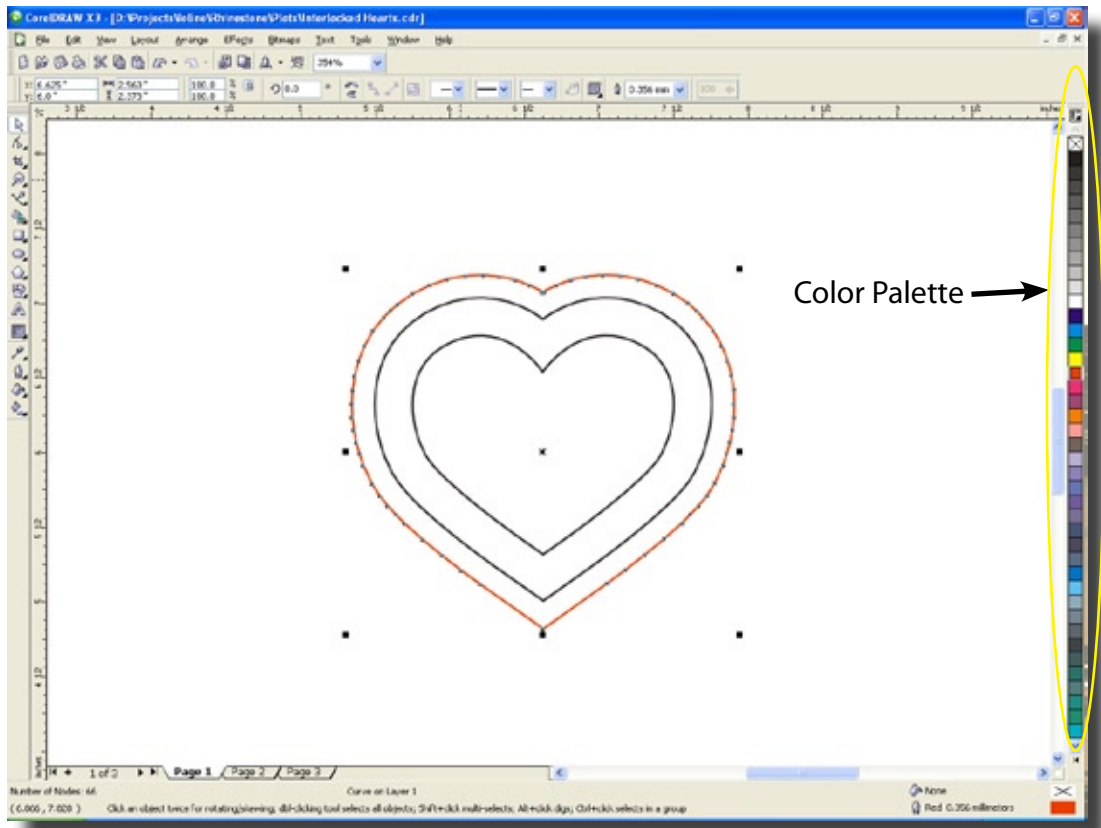
1. Open your design in CorelDraw.



Tip: If you want to make a design that fits on the whole transfer sheet, set your page size in CorelDraw to 13.25" Wide x 12" Tall. When making your design don't go over the edge of the page.

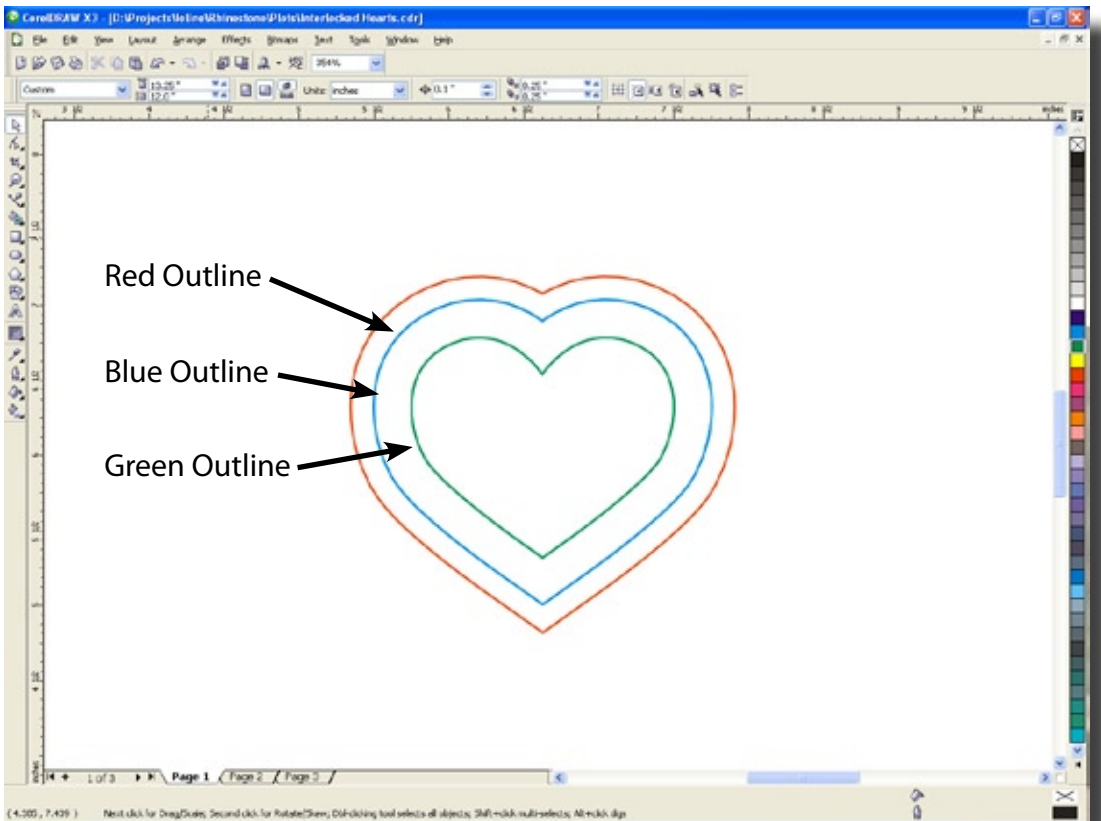
2. Select one of the shapes and 'Right-Click' on one of the colors in the palette on the right side of the screen.

Tip: Don't use black or any shade of grey for a color. They will show up on the same layer.

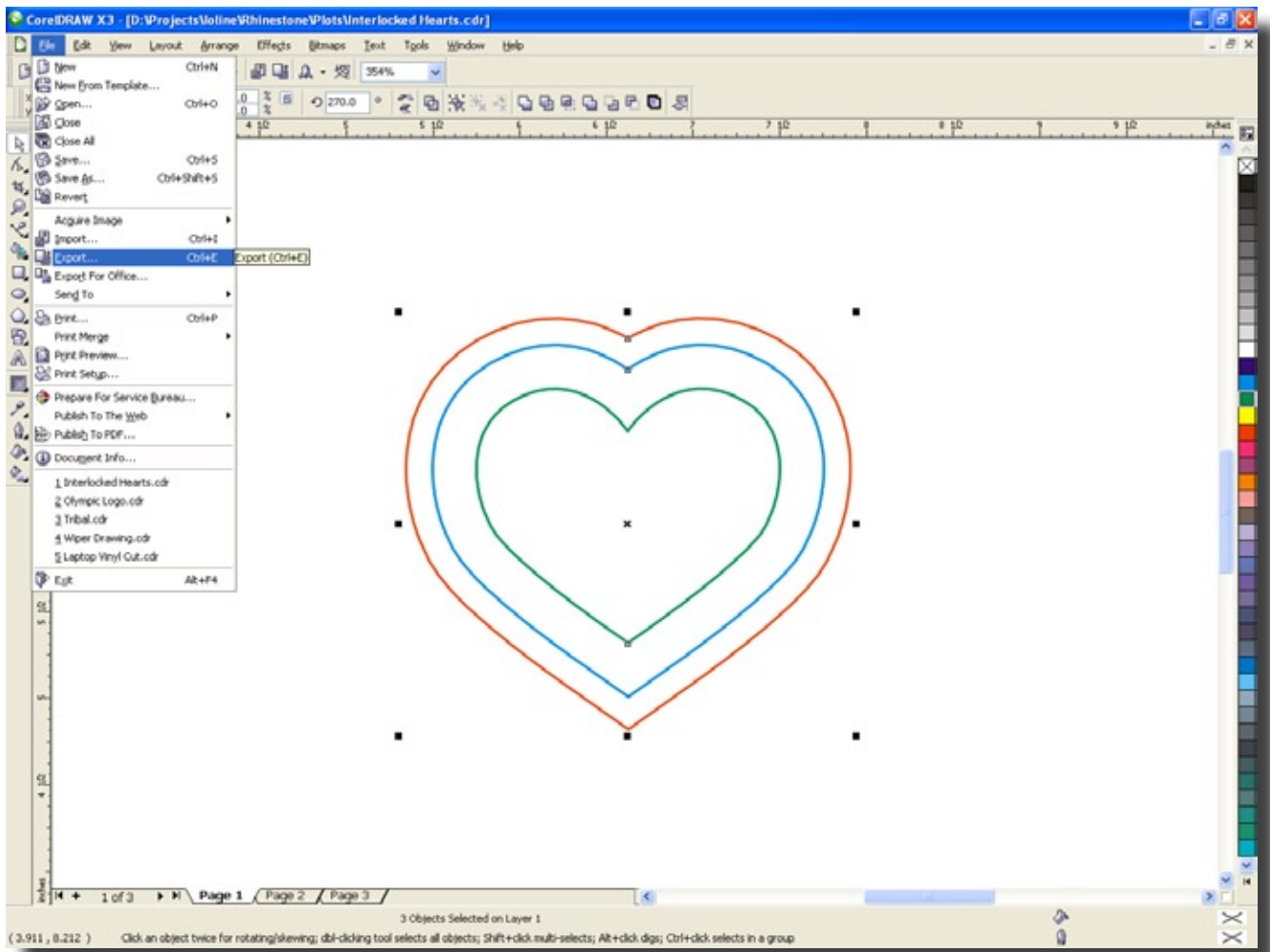


3. Do this for the second and third layer, but pick a totally different color for each.

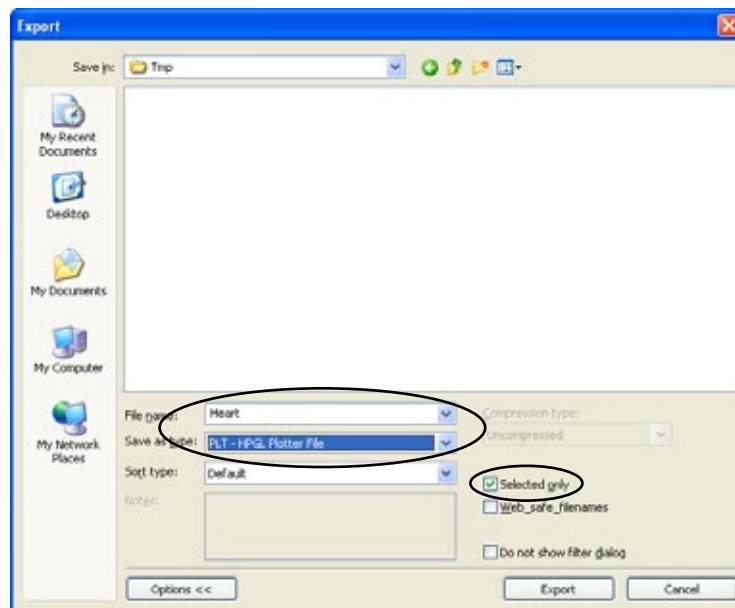
Note: It doesn't matter what colors you pick as long as they are different colors.



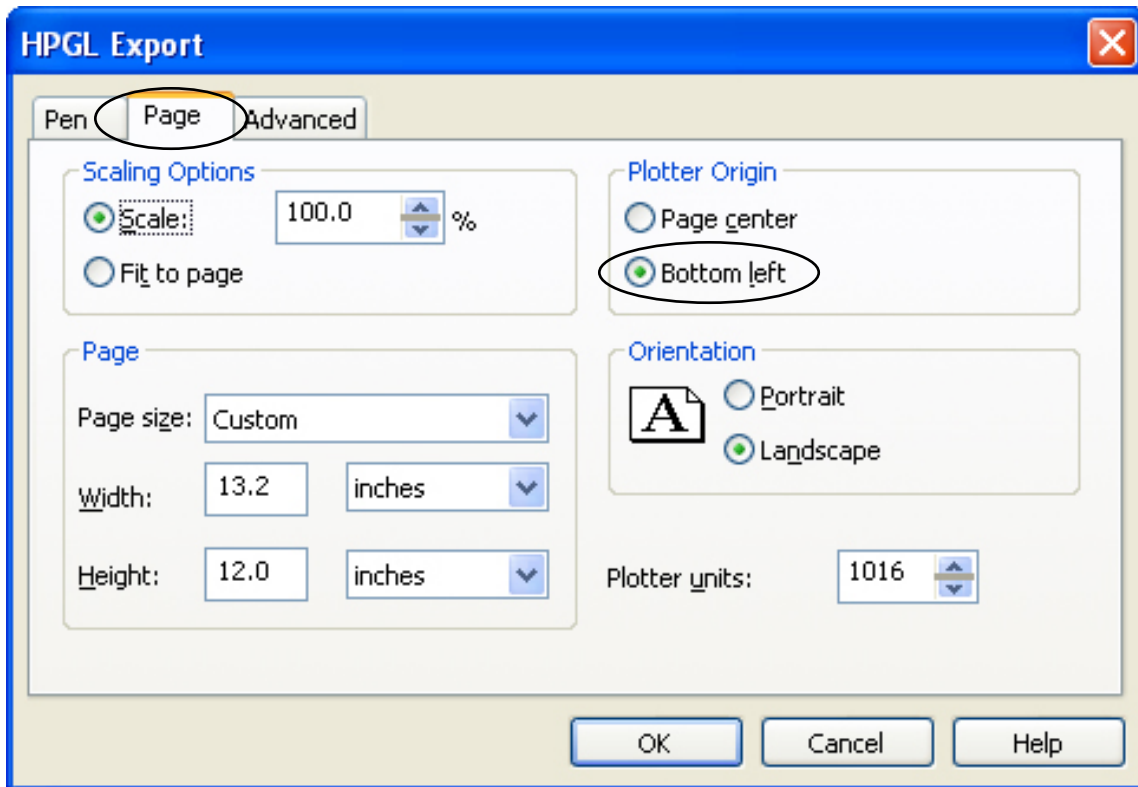
4. Make sure the entire design is selected and click 'File > Export...' (or press Ctrl-E)



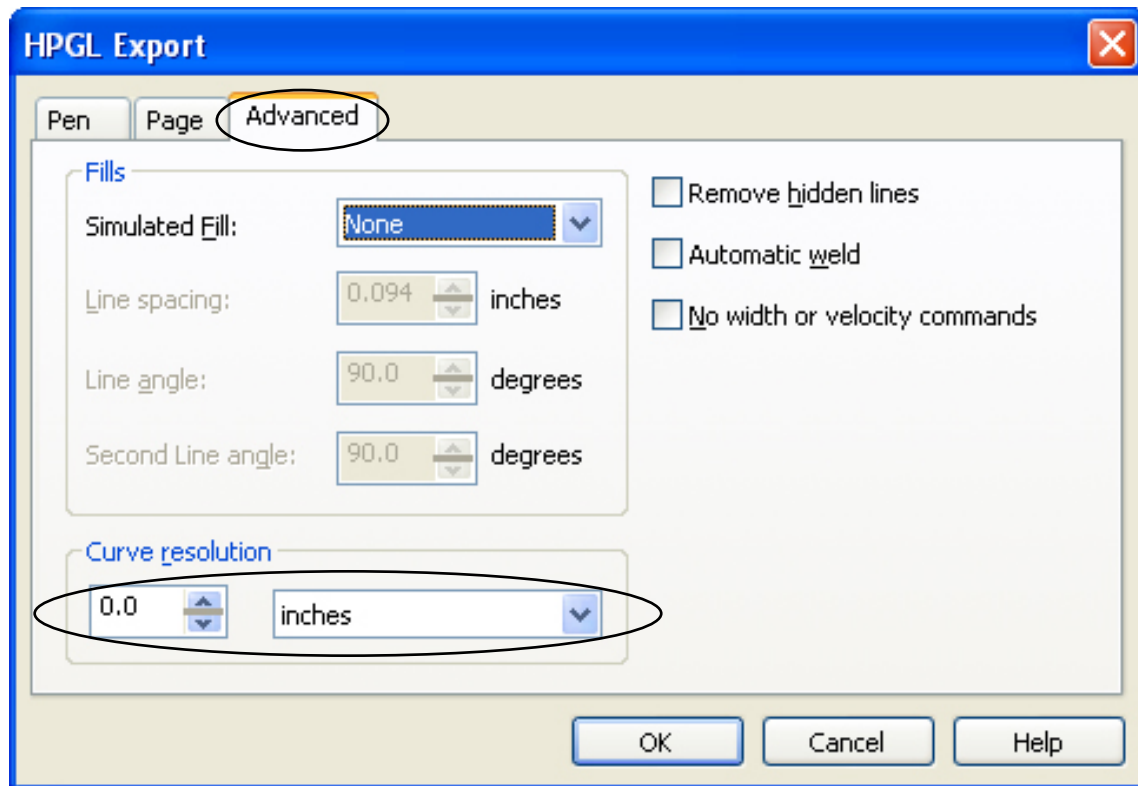
5. Choose a name and location for your file. Under 'Save As Type' select 'PLT - HPGL Plotter File'. Also make sure you check 'Selected Only'. Click 'Export'



6. In the 'HPGL Export' window click the 'Page' Tab. Make sure the 'Plotter Origin' says 'Bottom Left'.



7. Click on the 'Advanced' tab. Make sure the 'Curve Resolution' says 0.0 inches (zero-point-zero). Click 'OK'



Once you click **OK**, proceed to the last section '**Setting up a Design in CrystalStudio**'