

Adobe Illustrator 'DXF' Export



For: Ioline 101 and 301 (R8, 9 and 10) Software ONLY

1 Modifying the design

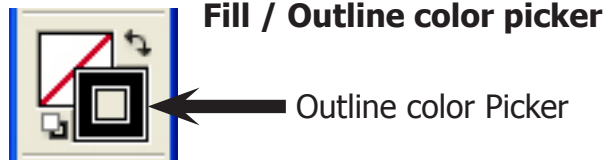
In order for the Ioline 101 and 301 software to see the DXF file properly the design must be modified with the following settings:

i NOTE

This procedure assumes you have a basic understanding of Illustrator. This is not a tutorial for Illustrator

Stroke

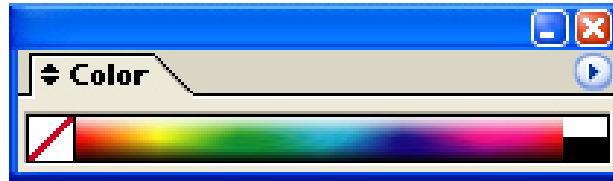
- A) Select the 'Outline Color' box toward the bottom of the tool bar.



- B) Select '0.5 pt' stroke in the Stroke window. *(This is necessary if you want to be able to see the design in the Ioline software.)*



- C) Select a color for the outline by clicking on a color in the color picker window.

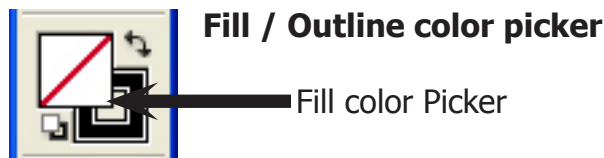


Note: If you are creating a KISS-Cut for the 300 System it is very important to pick between different colors for each layer. Choose colors like yellow, red, blue, green, black, etc.

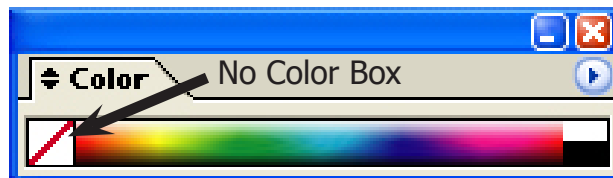
Warning: If you choose black as an outline color DO NOT choose a shade of grey as another layer color. Black and all shades of grey will all show up on the same layer.

Remove the fill

- D) Click the 'Fill Color Box' at the bottom of the tool bar.



- E) Click the 'No Color' box in the Color Picker.



Adobe Illustrator 'DXF' Export



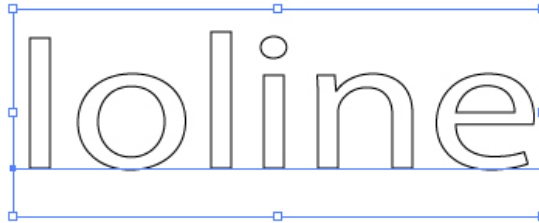
For: Ioline 101 and 301 (R8, 9 and 10) Software ONLY

2 Exporting the design

These are step by step instructions for exporting the design to open in Ioline 101 or 301 software.

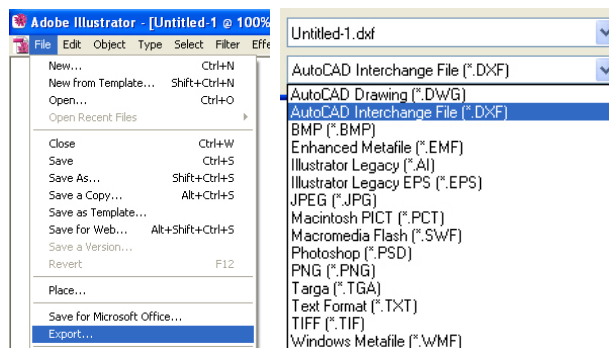
Exporting

- A) Select the design using the 'Selection Tool' at the top of the tool bar. Make a box around all artwork to be exported. *The artwork should be surrounded by a Blue Box with handles.*



- B) Click on File > Export

Name the file and choose a save location. *(You will need to be able to find the file again so remember the location)*

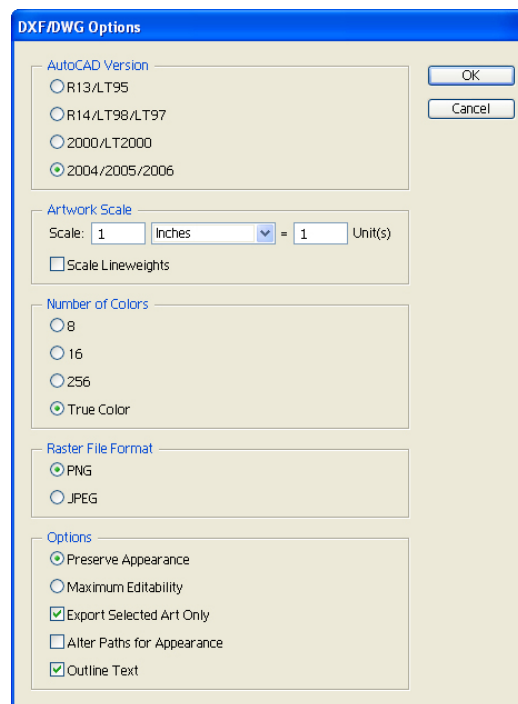
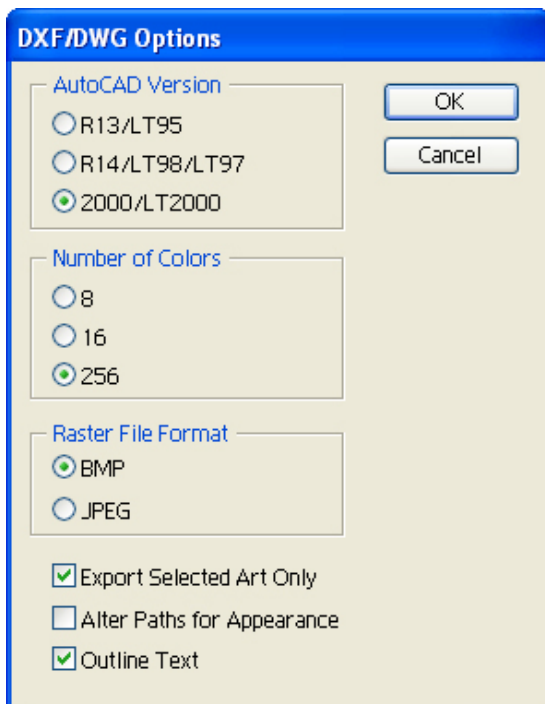


- C) Select 'AutoCAD Interchange (*.DXF)' in the 'Save As Type' drop-down box. Click 'Save'

- D) Make the same selections shown in the 'DXF / DWG Options' Export Windows below.

Illustrator 8 thru CS2

Illustrator CS3 and CS4



Adobe Illustrator 'DXF' Export



For: Ioline 101 and 301 (R8, 9 and 10) Software ONLY

3 101 and 301 settings

A) Open the 101 or 301 software



B) Click the 'Import Options' button on the main screen



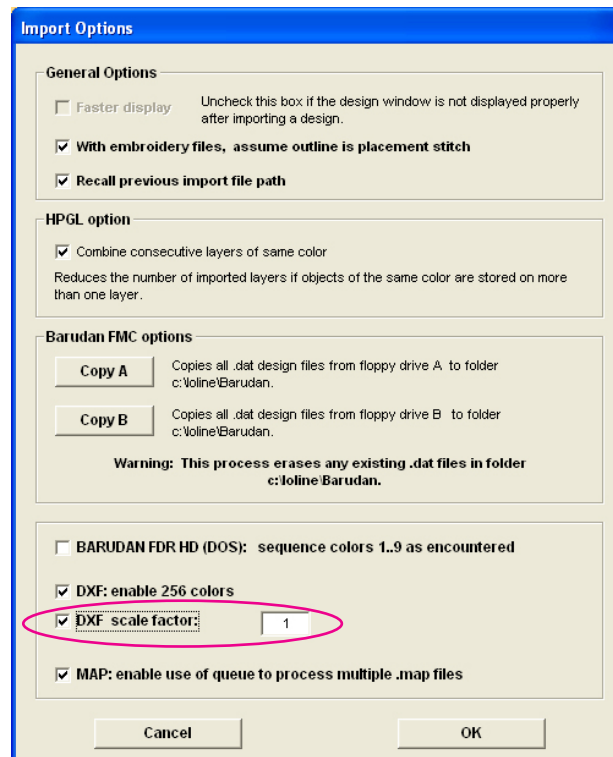
For Illustrator CS2 and earlier:

Uncheck the 'DXF Scale Factor' check-box.

For Illustrator CS3 and CS4:

Make sure the DXF Scale Factor is Checked. The number in the box to the right needs to say 1 (one)

C) Click 'OK'



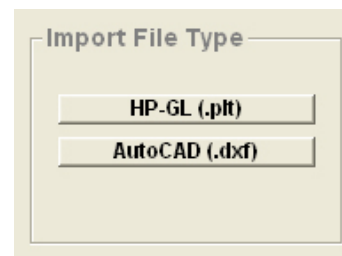
D) Click on the 'DXF' button on the right side of the 101 or 301 software window.

E) Locate the file you saved in step 2

Ioline 301



Ioline 101



F) Click the 'Load Import File' button



Adobe Illustrator 'DXF' Export



For: Ioline 101 and 301 (R8, 9 and 10) Software ONLY



14140 NE 200th St.
Woodinville, WA. 98072
(425) 398-8282

Troubleshooting:

The file does not show up

Some customers have had problems opening DXF files created in Illustrator CS3 for Mac OS X. The symptom is the design will not show up in the 101 or 301 software. Ioline Tech Support has run a few tests and has determined there is nothing in the 101 or 301 software causing the problem. Further testing has revealed that if the DXF file is emailed to another computer, the file will open fine in 101 or 301 software. Something on the Illustrator for Macintosh side is causing this issue and so far there is no fix other than emailing the file.

The design quality is very poor

If the quality of the design is poor compared to the original try this; Once the design is open click the 'Design Setup' button. In the upper left hand corner of the 'Design Setup' window uncheck the box that says 'Remove Segments Less Than'. The design should look better.

The design is cutting twice

If the design is cutting or twice remember to remove the 'Fill' from the design before it's exported from Illustrator. Designs that are filled and have an outline will always cut twice.

There are huge circles in a design with text

If you see huge circles in the design when it's opened in the 101 or 301 software, try this fix; Open up the original design in Illustrator. Select the artwork and click the 'Type' menu, then click 'Create Outlines'. This will convert your text into a graphic and remove the font information from the design. The huge circles are the dots of a lower case "i" or a period.

If you use the square or circle tools in Illustrator to create your design, you may have to convert them to a graphic as well. Follow this fix; Open the original design in Illustrator. Select the artwork and click the 'Object' menu, then select 'Path'. Click on 'Simplify'. When the next window opens make sure there is a check in the 2 boxes at the bottom of the window (Straight Lines & Show Original). Click 'OK'. Export the design again. This should get rid of the problems the next time you open it in the Ioline software.