

Plotting Direct to the Ioline FlexJet with Gerber AccuMark 7.x

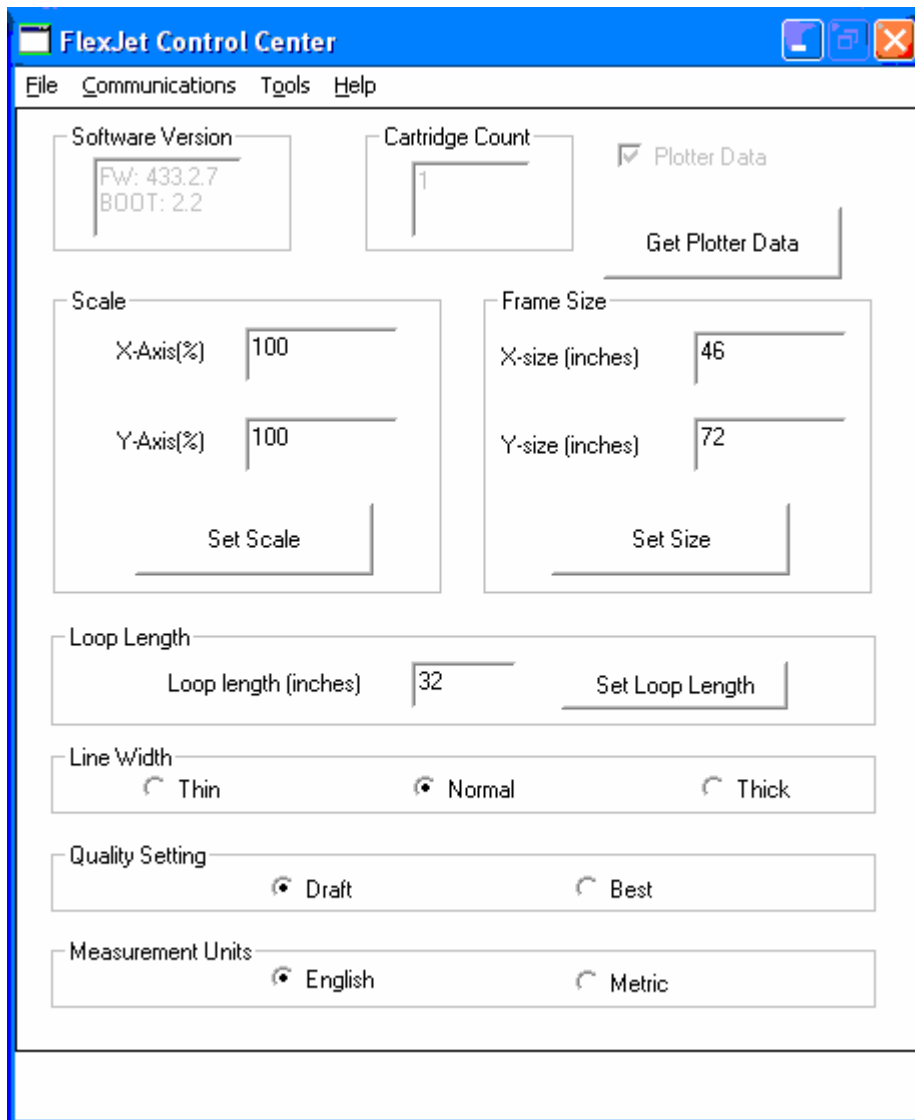
Revision A, 10.5.2006

KSR

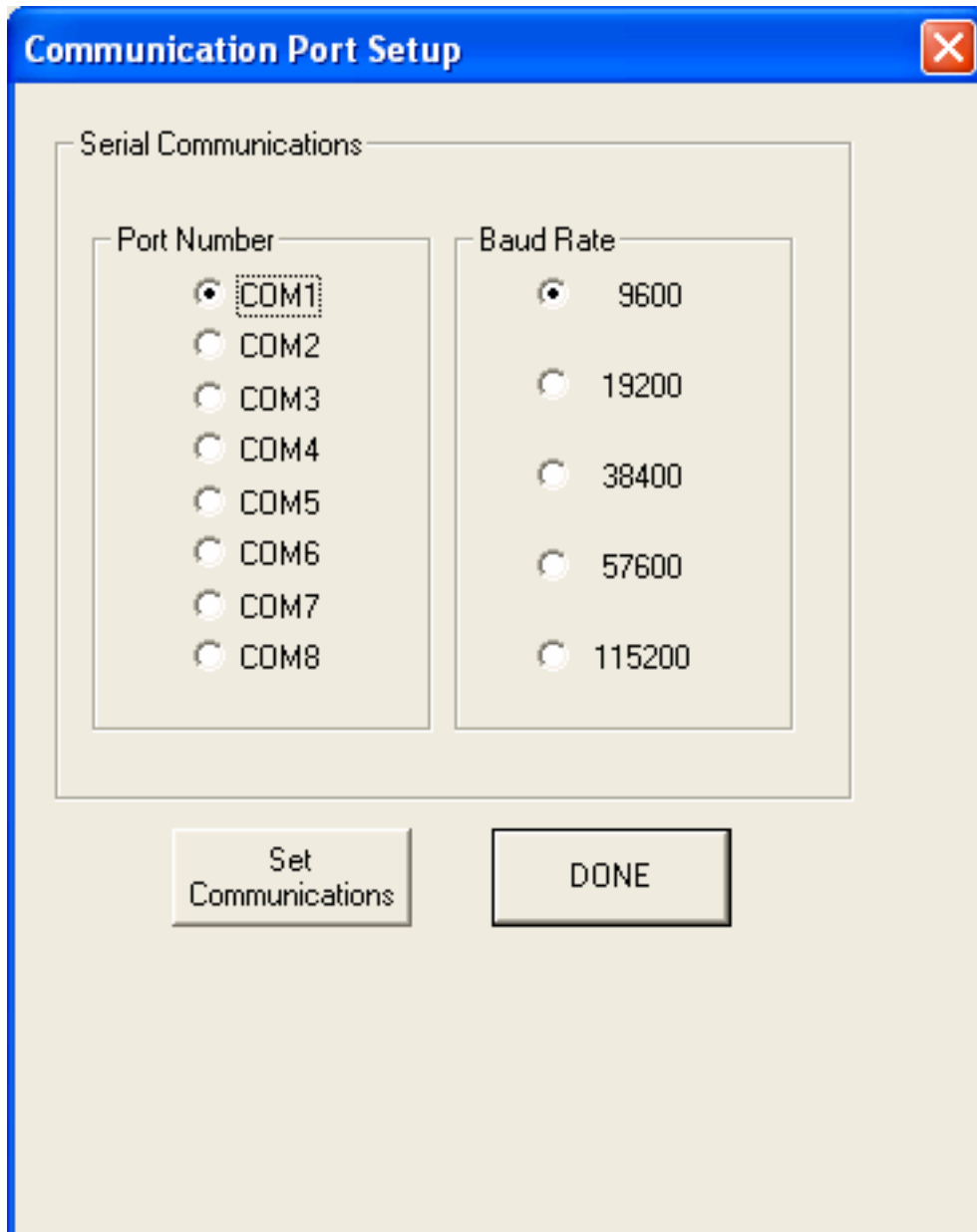
Note: Gerber compatibility requires firmware version 434.x or later.

Preparing the Printer

1. Power on the FlexJet and set an Origin as described in the user manual.
2. Open the *FlexJet Control Center* software. Make sure that communications are established. The main screen will display normal machine settings like the software version (see below). If communication between the FlexJet and the Control Center are not achieved, follow the procedures in the user guide to reset the baud rate to the default and try again.



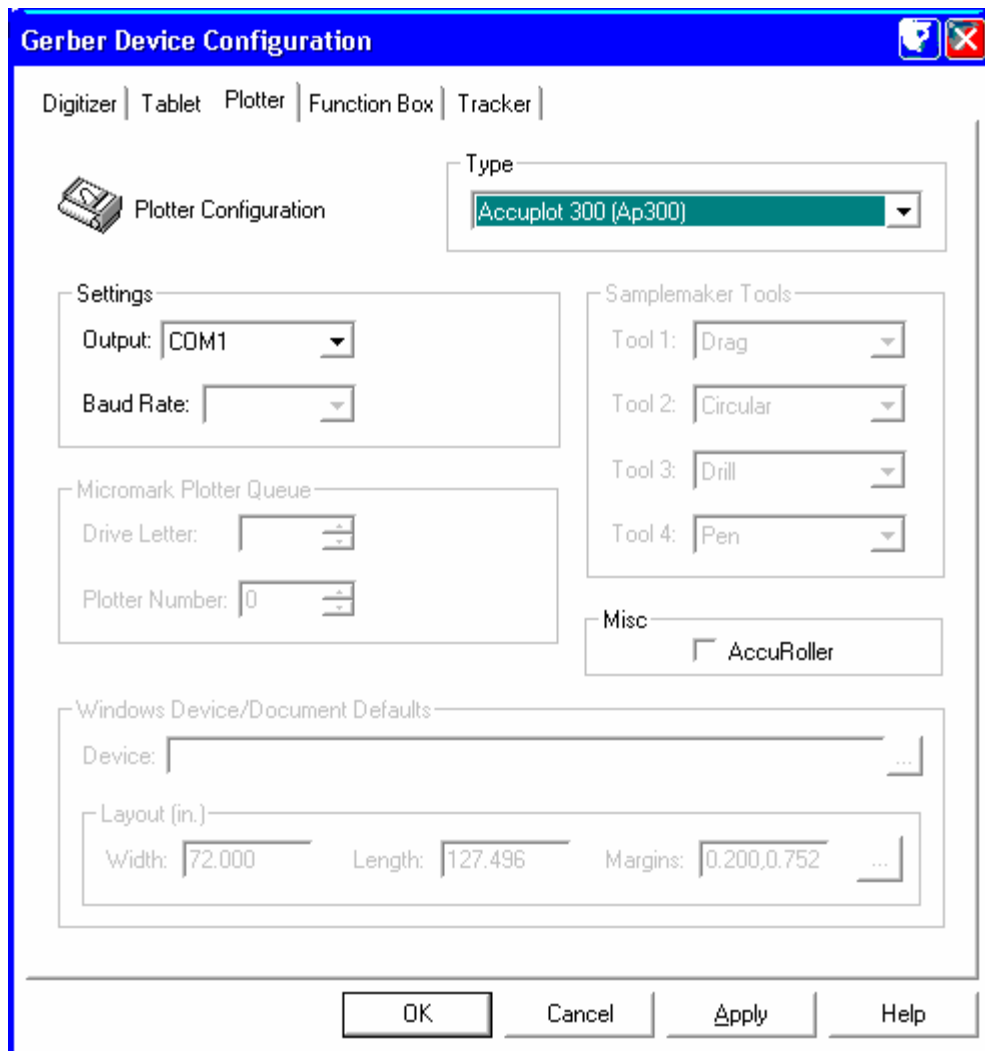
3. Choose **Communications>Settings** from the main menu.
4. Change the baud rate from the current setting to **9600** (see below).



5. Press the **Set Communications** button.
6. A message should appear that communications were successfully changed.
7. Close the Control Center and cycle power on the FlexJet for the changes to take affect then set an origin point on the paper where plotting will begin.

Setup the Accumark Hardware Type

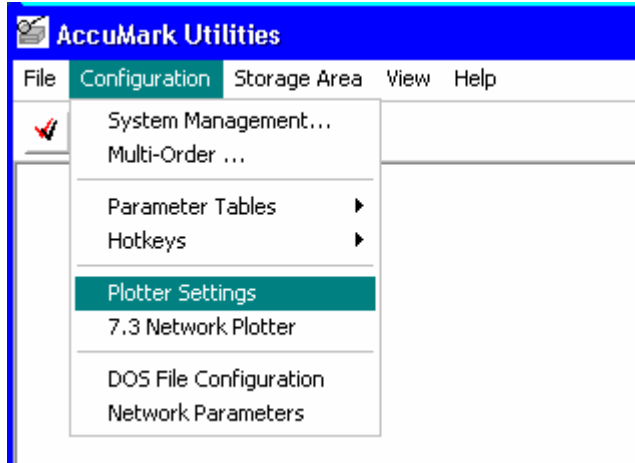
1. Open the **Accumark** folder.
2. Double click on the **Hardware Configuration** icon.
3. Click on the **Plotter** tab
4. Choose the **Accuplot 300 (AP300)** from the **Type** list and the **COM** port that the printer is connected to from the **Settings>Output** list (see below).



5. Choose **OK** to close the window.

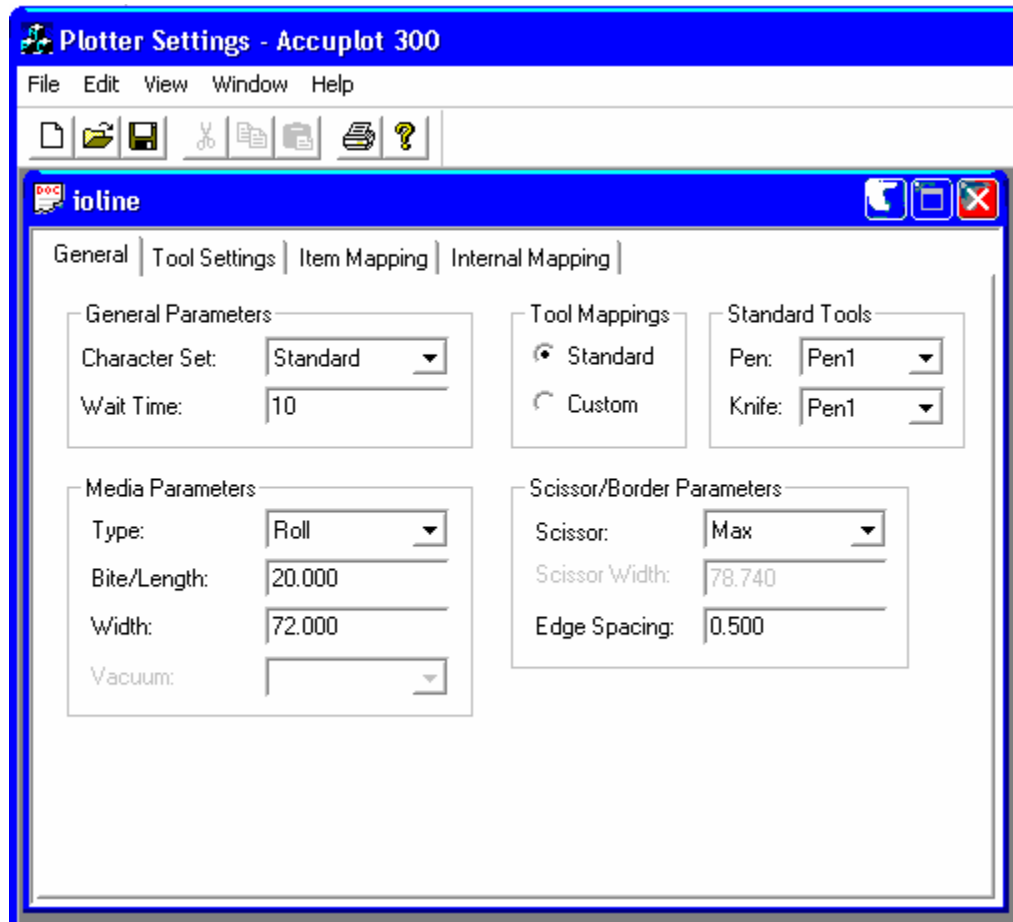
Setup the Accumark Plotter Profile

1. In the **AccuMark** folder, double click on **AccuMark Utilities**.
2. Choose **Configuration>Plotter Settings** from the menu (see below).



3. Choose **File>New** from the **Plotter Settings** window menu.

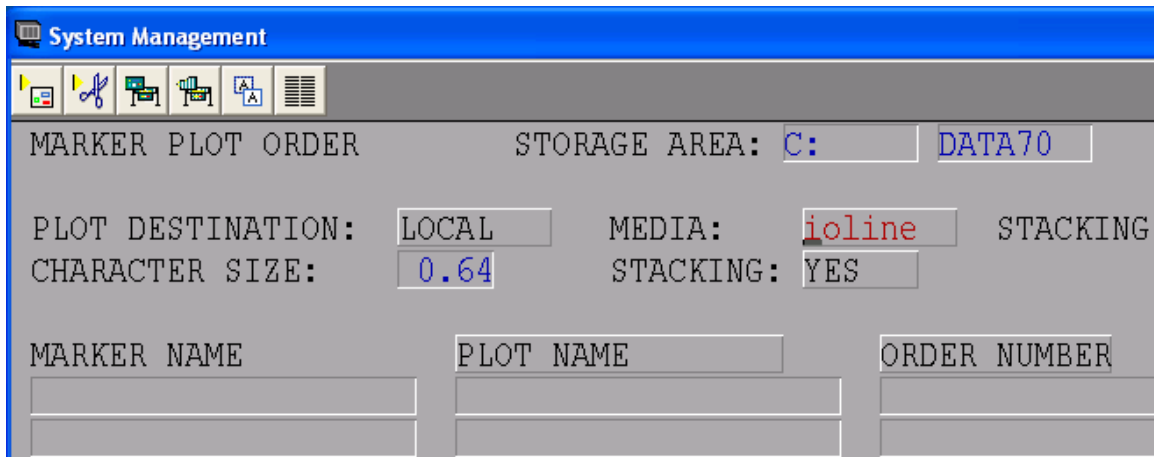
4. Click on the **General** tab (see below).



5. Under **Media Parameters**, choose **Type** as **Roll**. Set the **Bite/Length** equal to **20**, and the **Width** equal to **72**.
6. Choose **File>Save** from the **Plotter Settings** window menu. Type "*Ioline*" into the **Media** window then click the **Save** button.

Printing

1. When using **System Management** or any other application that outputs to the printer, always choose "ioline" as the media type.



The screenshot shows the 'System Management' application window. The title bar is blue with the text 'System Management'. Below the title bar is a toolbar with several icons. The main area of the window is a form with the following fields and values:

MARKER PLOT ORDER	STORAGE AREA:	C:	DATA70	
PLOT DESTINATION:	LOCAL	MEDIA:	ioline	STACKING
CHARACTER SIZE:	0.64	STACKING:	YES	
MARKER NAME	PLOT NAME	ORDER NUMBER		

2. Always make sure the printer has an origin point sent before printing. See the FlexJet user guide for information about setting up and using the machine.
3. Print markers, pieces, etc. using the normal procedures as described by Gerber.

Note: All trademarks are the property of their respective owners.