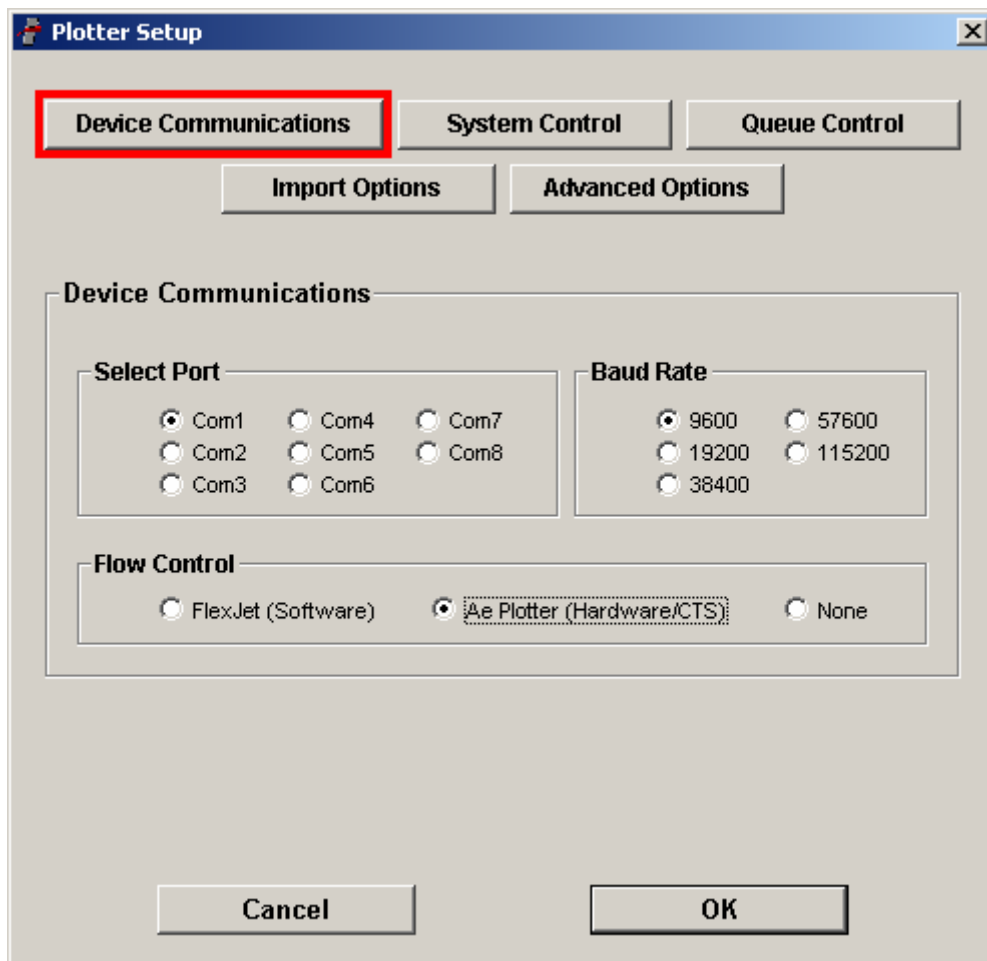


FLEXPLOT USER GUIDE ADDENDUM

Using FlexPlot with Ioline Cutters and Pen Plotters

Please follow these directions to properly setup the FlexPlot software for use with Ioline pen plotters and cutters.

1. Install the FlexPlot software using the included CDROM. After insertion in the CDROM drive, the installation program should start automatically. If it does not, **Browse** to the CDROM and double click on *iosetup.exe*.
2. Once installation is complete, review the *FlexPlot User Guide* for usage information.
3. Start the FlexPlot program.
4. Before using FlexPlot for the first time, click on the **Setup** button then click the **Device Communications** button. Make sure that the COM port number matches the port where the machine is connected. Check that the **Baud Rate** is 9600 and that **Flow Control** is set to *Ae Plotter (Hardware/CTS)*. The settings should match the screen shown below.



5. Begin using FlexPlot with the Ioline equipment as described in the user guides.